

Single Flavor, Pressurized Soft Serve/Yogurt Freezer

217/217R

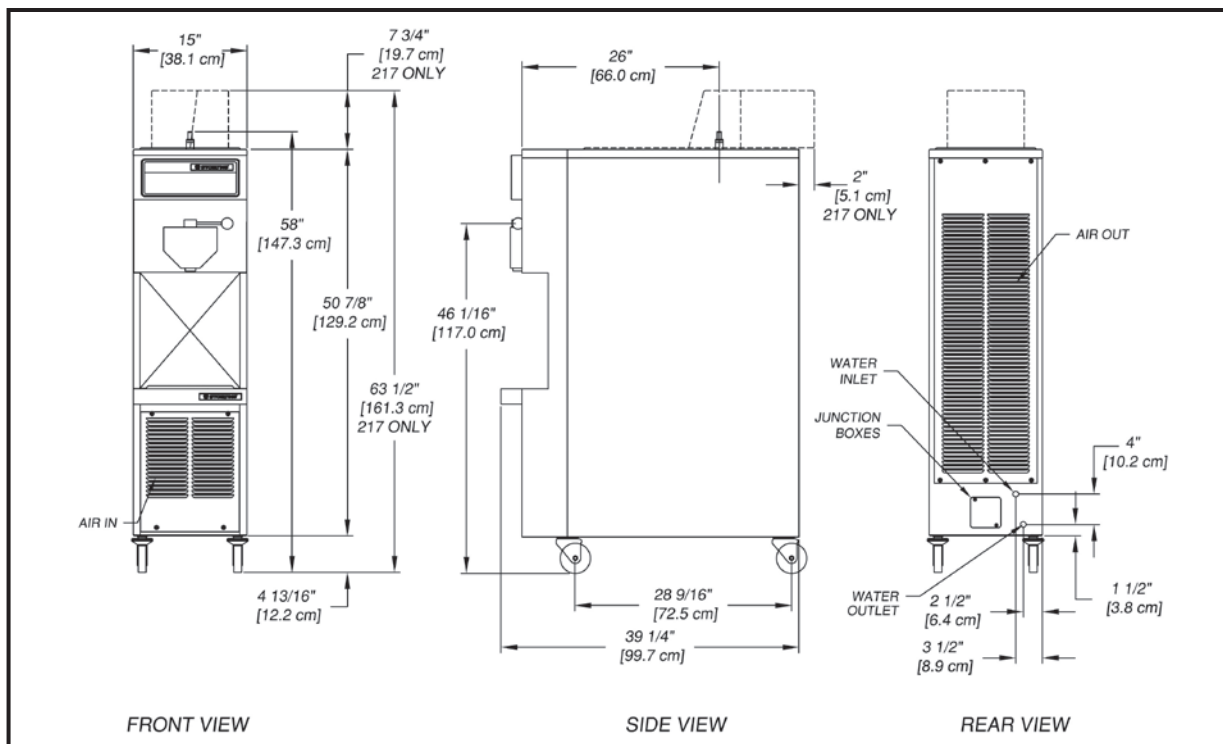


- High production capacity with a 14,000 Btu/hr compressor and 2 hp drive motor; dispenses up to 425 five-ounce cones per hour.
- Superior product quality.
- Long wearing, self-sharpening auger flights gently fold product.
- Ideally suited for high volume operations, such as fast food locations, drive-ins, theme parks, institutions, and recreational facilities.
- Model 217 built-in mix pump or 217R remote pump ensures firm, delicious, and profitable soft serve product with consistent overrun even under the most demanding conditions.



217R





Dimensions	Model 217		Model 217R	
	Machine	with crate	Machine	with crate
width	15" (38,1 cm)	25" (63,5 cm)	15" (38,1 cm)	25" (63,5 cm)
height	63-1/2" (161,3 cm)	67" (170,2 cm)	55-3/4" (141,6 cm)	67" (170,2 cm)
depth	39-1/4" (99,7 cm)	51" (129,5 cm)	39-1/4" (99,7 cm)	51" (129,5 cm)
Weight	415 lbs (188,2 kg)	525 lbs (238,1 kg)	385 lbs (174,6 kg)	495 lbs (224,5 kg)
Electrical* circuit ampacity overcurrent protection device	A/C, 1 Phase	A/C, 3 Phase	W/C, 1 Phase	W/C, 3 Phase
	27A minimum 35A maximum	20A minimum 25A maximum	26A minimum 35A maximum	19A minimum 25A maximum
Compressor	14,000 Btu/hr			
Drive Motor	2 hp			
Air Flow	Air cooled units require 6" (15,24 cm) air space at back and front			
Plumbing Fittings	Water cooled units require 3/8" N.P.T. water and drain fittings. Maximum water pressure of 130 psi. Minimum water flow rate of 3 GPM. Ideal EWT of 50°-70°F			
Hopper Volume	6.5 gallon (24,61 liters)		N/A	
Freezing Cylinder Volume	1.33 gallon (5,03 liters)			

Continuous research leads to ongoing product improvements; therefore, these specifications are subject to change without notice and should not be used as installation specifications.

* Machine requires a dedicated electrical circuit.

Distributed by:



502 Highway 67 • Kiel, WI 53042-1600
 920-894-2293 • 800-558-5807
 Fax: 920-894-7029
 E-mail: foodservice@stoelting.com
 www.stoeltingfoodservice.com

Certified, Listed
and/or Recognized by:



ISO 9001:2008 Registered | STMF-109 12/12